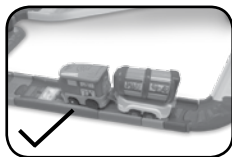
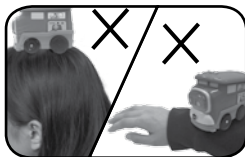


# Toot-Toot Drivers Motorised Train User's Manual

**WARNING:** All packing materials, such as tape, plastic sheets, packaging locks and tags are not part of this toy, and should be discarded for your child's safety.

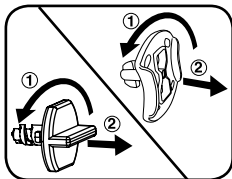
**NOTE:** Please keep user's manual as it contains important information.

**WARNING:** For your child's safety, only use the motorised train on Toot-Toot Drivers train tracks. Do not roll the train on your clothing, body or hair while the motorised train is turned on. If something gets caught in the train's wheels while the motor is on, lift the train up so it is no longer touching your child or slide the mode selector switch to the off position to turn off the motor.



**Unlock the packaging locks:**

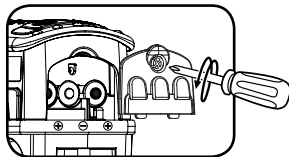
- ① Turn the packaging lock anti-clockwise several times.
- ② Pull out and discard the packaging lock.



## GETTING STARTED

### BATTERY INSTALLATION

1. Make sure the unit is turned **OFF**.
2. Locate the battery cover on the rear cabinet of the train. Use a screwdriver to loosen the screw.
3. Install 3 new AAA (AM-4/LR03) batteries following the diagram inside the battery box. (The use of new alkaline batteries is recommended for maximum performance.)



1

91-003245-004 ©

4. Replace the battery cover and tighten the screw to secure.

### BATTERY NOTICE

- Use new alkaline batteries or fully charged NI-MH (Nickel Metal-hydride) rechargeable batteries for best performance.
- Use only batteries of the same or equivalent type as recommended.
- Do not mix different types of batteries: alkaline, standard (carbon-zinc) or rechargeable (Ni-Cd, Ni-MH), or new and used batteries.
- Do not use damaged batteries.
- Insert batteries with the correct polarity.
- Do not short-circuit the battery terminals.
- Remove exhausted batteries from the toy.
- Remove batteries during long periods of non-use.
- Do not dispose of batteries in fire.
- Do not charge non-rechargeable batteries.
- Remove rechargeable batteries from the toy before charging (if removable).
- Rechargeable batteries are only to be charged under adult supervision.

### Disposal of batteries and product



The crossed-out wheellie bin symbols on products and batteries, or on their respective packaging, indicates they must not be disposed of in domestic waste as they contain substances that can be damaging to the environment and human health.



The chemical symbols Hg, Cd or Pb, where marked, indicate that the battery contains more than the specified value of mercury (Hg), cadmium (Cd) or lead (Pb) set out in Battery Directive (2006/66/EC). The solid bar indicates that the product was placed on the market after 13th August, 2005.

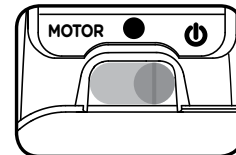
Help protect the environment by disposing of your product or batteries responsibly.

For more information, please visit:  
[www.recycle-more.co.uk](http://www.recycle-more.co.uk)  
[www.recyclenow.com](http://www.recyclenow.com)

## PRODUCT FEATURES

### 1. OFF/MOTOR SELECTOR SWITCH

To turn the unit **ON**, slide the **OFF/ MOTOR SELECTOR SWITCH** to the **MOTOR MODE** ( **MOTOR** ) or **MANUAL PLAY MODE** ( **⏻** ) position. To turn the train **OFF**, slide the **OFF/MOTOR SELECTOR SWITCH** to the **OFF** ( **●** ) position.



2

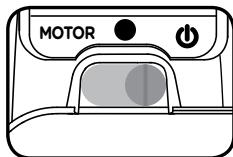
## 2. AUTOMATIC SHUT-OFF

To preserve battery life, the motorised train will automatically power-down after approximately 50 seconds without input in **MANUAL PLAY MODE**. The unit can only be turned on again by pressing the light-up button or pushing the train quickly. In **MOTOR PLAY MODE**, the train will automatically power-down after approximately 5 minutes without input. The train can be turned on again by pressing the light-up button or turning the unit off and back on.

**NOTE:** This product is in try-me mode in the packaging. After opening the package, turn the vehicle **OFF** and **ON** again to proceed with normal play. If the unit powers down while playing, we suggest changing the batteries.

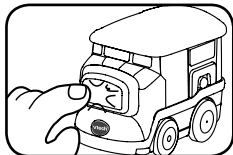
## ACTIVITIES

1. Slide the **OFF/MODE SELECTOR SWITCH** to turn the unit **ON**. You will hear train sounds, a song and a phrase. The motorised train will move forward automatically when it's in **MOTOR PLAY MODE** (Note: The motorised train's back wheels need to be on a firm surface in order to trigger the motor.) The light will flash with the sounds.



2. In **MOTOR PLAY MODE**, the motor will stop automatically two seconds after you remove the motorised train from the tracks (sold separately). The motor will restart once the motorised train is put back down.

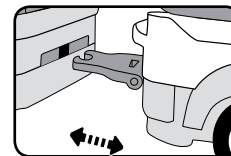
3. Press the **LIGHT-UP BUTTON** to hear train sounds, songs and phrases. Press and hold the **LIGHT-UP BUTTON** to stop the motor while in the **MOTOR PLAY MODE**. The motor will restart after the button is released. The light will flash with the sounds.



4. While in the **MANUAL PLAY MODE**, push the motorised train over any pass-through **SmartPoint®** location which can be found on **VTech® Toot-Toot Drivers** play sets (each sold separately). You will hear greetings, fun sounds, short tunes and sing-along songs. The light will flash with the sounds.

5. While in **MOTOR PLAY MODE**, let the train run across pass-through **SmartPoint®** locations on **Toot-Toot Drivers** play sets (each sold separately). You will hear greetings, fun sounds, short tunes and sing-along songs. The light will flash with the sounds. Sometimes, the motorised train will make stops along the way for added fun.

6. The motorised train comes with a wheeled accessory that can attach to the train. Simply, connect the wheeled accessory to the back of the train. To remove the accessory piece, unhook the wheeled accessory from the train.



## CARE & MAINTENANCE

1. Keep the unit clean by wiping it with a slightly damp cloth.
2. Keep the unit out of direct sunlight and away from any direct heat source.
3. Remove the batteries when the unit will not be in use for an extended period of time.
4. Do not drop the unit on hard surfaces and do not expose the unit to moisture or water.

# TROUBLESHOOTING

If for some reason the program/activity stops working or malfunctions, please follow these steps:

1. Please turn the unit **OFF**.
2. Interrupt the power supply by removing the batteries.
3. Let the unit sit for a few minutes, then replace the batteries.
4. Turn the unit **ON**. The unit should now be ready to play again.
5. If the product still does not work, replace with an entire set of new batteries.

If the problem persists, please call our Consumer Services Department on 01235 546810 (from UK) or +44 1235 546810 (outside UK) and a service representative will be happy to help you.

## IMPORTANT NOTE:

Creating and developing **VTech**® products is accompanied by a responsibility that we take very seriously. We make every effort to ensure the accuracy of the information, which forms the value of our products. However, errors sometimes can occur. It is important for you to know that we stand behind our products and encourage you to call our Consumer Services Department on 01235 546810 (from UK) or +44 1235 546810 (outside UK), with any problems and/or suggestions that you might have. A service representative will be happy to help you. Receiver is connected.

CLASS 1  
LED PRODUCT



## PRODUCT REGISTRATION

Visit [www.vtech.co.uk/clubvtech/login](http://www.vtech.co.uk/clubvtech/login)  
to register your VTech product

By joining the VTech Club you can also enter competitions, find out about news and events, seek expert advice for parents and let your kids play fun learning games and activities.



## PRODUCT WARRANTY

Thank you for choosing this quality product from VTech. We hope it will bring many hours of entertainment, imaginative play and learning.

1. The product detailed above is covered by a one year warranty from the date of purchase, against any defects in materials or workmanship.
2. The product may be returned to the place of purchase. Alternatively the product can be returned to VTech Electronics Europe plc (see address below), with proof of purchase, without proof of purchase no replacement will be provided.
3. VTech Electronics Europe plc will examine the product and if it is found to be defective due to faulty materials or workmanship, will replace the product at their discretion.
4. If the product covered by this warranty is damaged due to misuse, modification or unauthorised repair, or because of faulty batteries, battery discharge or incorrect electrical connections, then this warranty becomes void.
5. This warranty is personal to the original purchaser and is not transferable.
6. Breakages to the LCD screen are not covered by the warranty.
7. Returns to VTech Electronics Europe plc should include a cheque or postal order for £1.50 towards the cost of return postage and packaging.
8. Products returned to VTech Electronics Europe plc, should be addressed as follows and packed carefully to avoid damage in transit (Please do not include batteries or adaptor). Please include details of the fault together with your name and address.
9. To keep an online record of your warranty, please register your product online at [www.vtech.co.uk/warranty](http://www.vtech.co.uk/warranty)

VTech Electronics EU PLC, c/o XPO Logistics, Warehouse 350, Cat & Fiddle Lane, West Hallam, DE7 6HE

THIS WARRANTY IS OFFERED AS AN EXTRA BENEFIT AND DOES NOT AFFECT CONSUMERS' STATUTORY RIGHTS.

This warranty is valid for the UK and Eire only. For products purchased outside the UK and Eire, please contact your local distributor or place of purchase.

